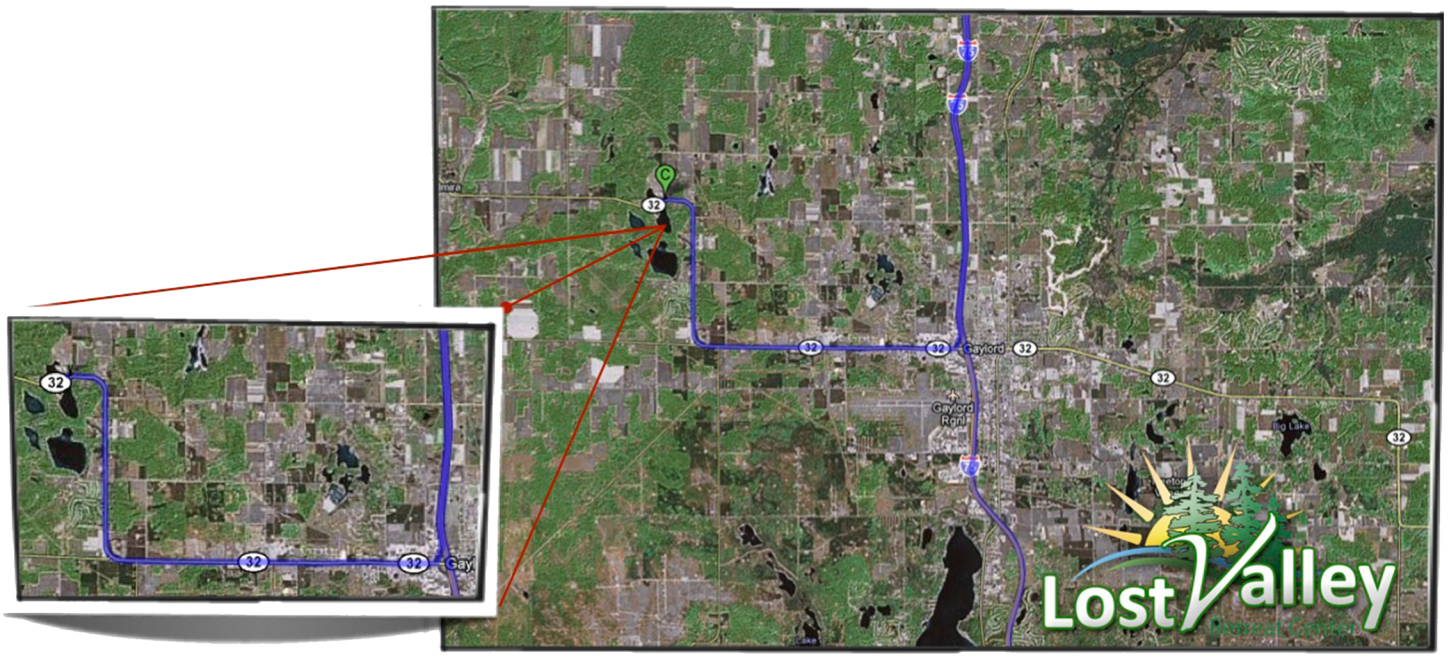




Directions

Lost Valley Retreat Center is located just 7 miles west of I-75 in Gaylord, Michigan and 1 hour south of Mackinaw where Lake Michigan and Lake Huron meet.

- On Interstate 75, take Exit 282 for M-32 toward Gaylord/Alpena
- Turn west on M-32 W/W Main St. Continue for 7 miles
- Veer right onto the Lost Valley Retreat Center property



When you Arrive:

After you veer right into Lost Valley Retreat Center, you will need to send your designated group leader to the Dining Hall, second level of the Retreat Center, to check in.